



# President's Message

## Barb McCarthy, PSS

When Roger Risley asked me to be a candidate for MAPSS President, I thought 'this is going to be work over the next three years, but it's my turn'. The kids were in college and I had more time for other things. I thought it would also be fun and challenging; something non-controversial and good for MAPSS. Now that my presidency is nearly over, and I reflect back on the past year, it has been both a fun and challenging experience.

My focus the past year has been in three areas: 1) effective technical education, 2) working committees, and 3) increased membership. Although we've made some progress, we need to continue our efforts, working together.

The Executive Committee is

the backbone of our organization; thanks to each committee member for your efforts and the regular Meet-Me-Calls. The work this past year by the committees was important; thanks! The group of members that collectively planned the 2009 Summer Workshop should be complimented for the job well done. Thanks to everyone who helped with Workshop logistics – the paperwork and receipts, digging pits, bringing equipment, serving food, buying beers and appetizers at Poncho Lefties, moving and cleaning up. We are fortunate to have Drs. Aziz Amoozegar and Satish Gupta as colleagues, willing to share of their time, knowledge and talents. I hope that some of you personally thanked them; if you haven't, send them an email and just say thanks.

So, as I continue on as Past-President, I hope to serve MAPSS in an effective capacity. That's my intention. Hope that you can attend the Winter Meeting in December. Remember; just do one thing for our organization next year, too.



Barb concentrating in the rain at the summer tour 2009.

## Soil Survey Data Used To Map Sensitive Surficial Aquifers

### Kim Steffen, NRCS

The Natural Resources Conservation Service (NRCS) Web Soil Survey (WSS) provides soil data produced by the National Cooperative Soil Survey. NRCS has soil maps and soil data available online for more than 95 percent of the nation's counties. There are currently 83 Minnesota

soil survey areas (counties) available on the WSS. The site is updated and maintained online as the single authoritative source of soil survey information. The NRCS Web Soil Survey provides users with the most current soil survey information. Users can create their own area of interest (AOI) and generate a soil map for your AOI. You can digitize

online an AOI from 0.1 acre up to 10,000 acres, or you can set your AOI for an entire county and run soil interpretations and other soil reports for your AOI.

The Minnesota counties available on the WSS include an aquifer assessment tool. The tool uses soil properties

*(Continued on page 2)*

### Inside this issue:

Upcoming Events	3
Soil Judging in Springfield, Missouri	3
PSS Rules Revisited	3
Executive Secretary Update	6

### Mark Your Calendars!

- MAPSS Winter Technical Event is December 4, 2009 in St. Cloud, MN.
- Send in applications for Soil Scientist of the Year by November 20, 2009.
- Vote for President and Treasurer by the end of November 2009.
- Renew your membership before December 31, 2009. The dues notification form is attached.

## Soil Survey Data - continued

to predict the presence of a sensitive surficial aquifer.

The "Aquifer Assessment (MN)" was developed for the Minnesota Pollution Control Agency. It is used for the preliminary evaluation of large individual sewage treatment systems to predict aquifer vulnerability and the potential risk of nitrogen impacting the aquifer. The tool predicts the presence or absence of a protective layer above an aquifer and the risk of nitrate movement through the soil into a possible surficial aquifer.

MN statute 103H.005 provides a definition of "sensitive area." Soils are considered sensitive to the impact of nitrogen on an aquifer if they contain coarse United States Department of Agriculture (USDA) textures in the bottom horizon, if they have bedrock within the profile, or if they are organic (Histosols). The "Aquifer Assessment (MN)" sensitivity rating and the Class V sensitivity rating of the Minnesota Department of Health are used in the Minnesota Pollution Control Agency's Level I Nitrogen Impacts to Aquifers Determination Worksheet. The NRCS also uses the aquifer assessment sensitivity rating for nutrient management planning in Minnesota.

There are likely many more applications of this soil interpretation for evaluating environmental resources. In Minnesota, the few soil data elements selected to predict a surficial aquifer give some surprisingly good results. Minnesota has a significant number of glacial outwash deposits. These areas typically have a surficial aquifer. Central and northern Minnesota also have large deposits of organic soils (peat lands) that are surficial aquifers.

Shallow soils that overlie bedrock can also be conduits to an aquifer.

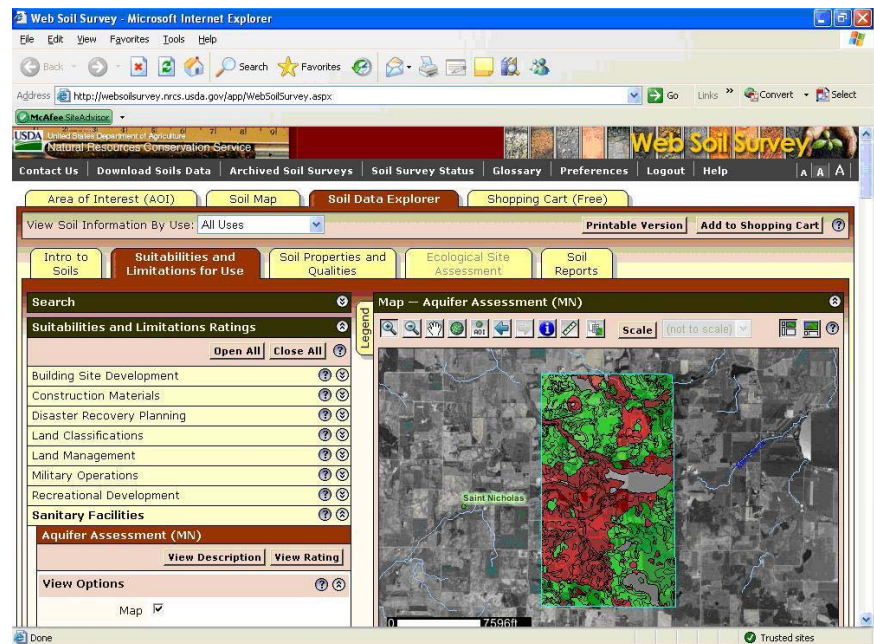
When the "Aquifer Assessment (MN)" is used, the interpretive output should be considered at a regional level. Figure 1 shows a large block of red where the sandy and gravely glacial outwash deposits occur and a high potential of a sensitive surficial aquifer in that area. There are also isolated small map units of organic soils that appear as "sensitive" (red) that would not be considered a regional surficial aquifer. Some interpretation of the soil map units is required to use this tool.

The Web Soil Survey also provides Geographic Information System (GIS) applications. You can create multiple thematic map interpretations and soil reports, save them to

your shopping cart (free), and create your own custom soil survey report (in PDF format) to print or download at a later date. A new feature recently released on the Web Soil Survey for GIS users is the ability to save and package your AOI as a shape file, and an Access template is automatically populated with the tabular data (soils data attributes) for your AOI. GIS users can download their projects from the Web Soil Survey to their workspace.

Visit <http://websoilsurvey.nrcs.usda.gov/app/> and explore the resource of online soil survey information.

Figure 1. Aquifer Assessment (MN) - Summary by Rating Value Meeting at the beginning of November.



## Winter 2009 Technical Event

The MAPSS Winter Technical and Business Meeting will be at the Best Western Kelly Inn), St. Cloud, MN on Friday, December 4, 2009.

Please review the updated SOPs on the website (bottom of the home page) for discussion and approval at the December meeting.

**Don't forget to vote for  
President and Treasurer  
before the end of November!**

### Interesting Things to Read (thanks to Gary Elsner)

[http://www.startribune.com/  
local/64327792.html?  
elr=KArks:DCIUBDia\\_nDaycUID3aPc:\\_Yyc:aUU](http://www.startribune.com/local/64327792.html?elr=KArks:DCIUBDia_nDaycUID3aPc:_Yyc:aUU)

[http://www.startribune.com/local/  
west/64458377.html?  
elr=KArksLckD8EQDUoaEyqyP40:DW3ckUID3aP  
c:\\_Yyc:aUniaec807EyUsI](http://www.startribune.com/local/west/64458377.html?elr=KArksLckD8EQDUoaEyqyP40:DW3ckUID3aPc:_Yyc:aUniaec807EyUsI)

[http://www.vector1media.com/dialogue/  
interviews/9388-globalsoilmap-mapping-the-  
worlds-soil](http://www.vector1media.com/dialogue/interviews/9388-globalsoilmap-mapping-the-worlds-soil)

## Upcoming Events

---

**November 1-5, 2009**

**ASA-CSSA-SSSA Annual Meeting**  
“Footprints in Landscape – Sustainability through Plant and Soil Science” in Pittsburgh, PA.

[www.acsmeetings.org](http://www.acsmeetings.org)

**November 16-18, 2009**

**National Brownfields Conference** in New Orleans, LA.

[www.brownfields2009.org](http://www.brownfields2009.org)

**December 4, 2009**

**MAPSS Winter Technical Event** in St. Cloud, Minnesota.

[www.mnsoilscientist.org](http://www.mnsoilscientist.org)

**Now through January 3, 2010**

**“Dig It! The Secrets of Soil”** at the Smithsonian Natural History Museum in Washington DC!

<http://forces.si.edu/soils/>

Articles for the Winter issue of the Auger will be accepted through

January 15, 2010

[mapss@mnsoilscientist.org](mailto:mapss@mnsoilscientist.org)

## Soil Judging in Springfield, Missouri - Spring 2009

---

March 28, 2009

Gateway to the Ozark Mountains and to Rough, Red, and Rocky Soils.

**Saturday**—Well, we left in the sunshine of a nice spring morning in Minnesota and the farther south we went the more we digressed into winter. When we passed Des Moines, Iowa the temperature had fallen from 39 to 35 and it was starting to spit some rain. By the time we entered Missouri the rain had changed to frozen ice pellets. We stopped for lunch at a combination Wendy's and truck stop, but Wendy's had a policy to wait on all the drive through customers, so I left to follow Sondra to the sandwich shop, tiny little ice pellets bounced off my head as I

ran with little grace to the sandwich shop and back.

The students I took on this trip were: Sondra Campbell a junior in ESPM (Soil Science Minor) who went to school on the west coast prior to coming to Minnesota and is now from St. Paul. Karyn Jones is a senior in ESPM (Soil & Water Conservation track) who recently was in the Gopher Women's basketball pep band. She is from Eden Prairie Minnesota. David Campbell is a senior in ESPM (Environmental Sciences track) and is from Mound that is west of the Twin Cities. Nick Saumweber an ESP Senior (Soil Science track) is from St. Paul and was on the team I took to the

National judging last year. Karyn and David finished in the top 5 at the regional and Nick and Sondra were not far behind.

We passed through Kansas City in a blizzard around 4:00 pm at 20 and 40 mph, until a semi truck going 60 sucked us along in the slush splash-wake it created. The roads were bad then got worse as the snow thickened into a white out or slush out depending on the situation. We took our time and did not join all the cars that we saw in the ditch. The trucks stayed out of the ditches, I guess they were going too fast to spin out. Eventually we got to Springfield at 6:30 pm and our trip took 10.5 hours. The snow soon

## PSS Rules Revisited

---

**Mary West, PSS, AELSLAGID Soil Scientist Member**

*“They always say time changes things, but you actually have to change them yourself.”* Andy Warhol (1928-1987)

Did you know that our PSS rules have not been revised since they were originally published in back in 1996? In order to ensure our rules are current, a small, crack group of MAPSS Professional Soil Scientists have agreed to assist me in this endeavor by reviewing our existing rules,

comparing them with rules from other states with PSS licensure, and proposing any needed changes to the AELSLAGID Board.

The Board will also be proposing some minor changes to Statute 326.04 and 326.10, so our rule revision team will focus on Chapters 1800 (Licensing and Operation) and Chapter 1805 (Rules of Professional Conduct).

If you've ever worked with rule writing before, you know how time-consuming and complicated it can be; it's a long proc-

ess from writing proposed revisions until final support and adoption by our legislators. Having a core group of dedicated MAPSS professionals involved from start to finish is essential.

I wish to extend my thanks to these dedicated MAPSS members for volunteering their time and talents for our profession: Jim Balogh, Terry Bovee, Paul Brandt, Suzanne D'Souza, Jorja DuFresne, Gary Elsner and MarkWespetal.

Stay tuned to The Auger for updates on this exciting project!

## Soil Judging in Springfield, Missouri—continued

followed us into town. I guess being from Minnesota has some advantages, as people kept saying “You must be used to this snow stuff”. We would gently reply “Yes, but we came south to get away from it”. We crashed for a while then went to a nearby Mexican place for a nice south of the border dinner to see if eating south would warm the outdoor atmosphere.

Later I was stuffed with taco salad. We all went back to the motel to relax, get out of the moving van, and get organized for Monday. Maps and soil pit descriptions are looked at by the coach along with our schedule. I let the students know we are leaving the motel at 7:30 am. Soon it is 11:30 pm after reading the paper and my eyes are now shutting.

**Sunday** – We are up and the snow is down on the ground. We had about a ½ inch so all is a lovely white; unless you are going to look at soil pits then it is not so lovely. We all had some breakfast though mine was a small pastry and coffee. That taco salad from last night is still staying put in my stomach for now. I fill the thermos with coffee and we head out to the practice sites at Compton Hollow. This area is a nature preserve that is some very old farm land that has been in trees for 50 to 75 years. The first site had a few feet of water in it, so Tom (coach at SWSU) was pumping it out. We started looking at this soil all together about 9:50 am and the temperature was up to 39. We finished quickly with our first look at a Paleudult with a fragipan. The soil had a lot of chert fragments and the students appreciated the red soil color. Chert is a very hard rock that is a fine-grained silica-rich [microcrystalline sedimentary rock](#) that may contain small [fossils](#) and often has sharp corners and sides.

We next went to the second site that was chocked full of chert fragments. We again went quickly over this site because it was going to be similar to a site we would look at later. Our third site was site 1 and we had to cross a creek that was full of water after the two inches of rain that had fallen in the past three days. We all had on our rubber boots except for Karyn so David was kind enough to carry her across the crick (Missouri for creek). This soil was much different because it was developed from shale rock, gray in color and high in clay with few rock fragments. We worked in pairs on this site and the next one that had a lot of rock fragments and was again red in color with fragipan characteristics.

After these sites it was now 1:00 pm and time for lunch. We had fruit, bananas, apples, granola bars and PB & J sandwiches. Soon it was time to hit the pits. The temperature was now near 60 with a nice wind blowing, which gave our skin a nice red glow to match the red, rough and rocky soils. We finished this Paleudult and were on our way back to the motel. We all cleaned up and rested until 5:30 pm when we went to the Italian fast food restaurant and enjoyed some okay food. My white sauce and noodles were just so so, so I traded them with Sondra for her meat sauce which since she is mostly a vegan, it was too much meat. Next we went back to the motel and I got a glimpse of Tiger Woods on the 17<sup>th</sup> hole where he made bogey to tie for the lead. I missed his great birdie on 18 to win as we had to head out to our meeting to learn about the geology of the area.

We found Southwest Missouri State University campus and parking. Unfortunately, the talk was okay but did not give enough background on the whole geology of the area. We did learn a few things that will help us with the sites we see the next few days. The weather is supposed to be okay on Monday and Wednesday with a chance of rain on Thursday. After the meeting we all went to our rooms to crash, work on soil homework, or watch TV. I did all three. I did read about Tigers win on the internet.

**Monday** - We got to sleep in as our time in the pits started at 9:30 am. We left a little late and then got lost for a few miles that took us out of our way, but we eventually found the farm and got started. We did the first site as a team, it was a Paleudalf. The parent materials today had more bases so the soils were not as acid. The soils were still rough, rocky and red or so they tell us. The temperature was 48 when we started and warmed into the low 60s. The wind came up and was blowing strong the rest of the day. I think any surface not protected is wind blown, including my head. We had some rather long walks to the top of the big hills and the wind blew and blew. We had to cross electrical fences by pulling down the gate hook and then putting it back. No one got shocked. On our last pit David's clipboard allowed the wind to send his papers down wind and we all had to go chase them. We all had to carefully roll under the electrical fences to pick up the papers while at the same time we had to be quick without rolling into a fresh cow pie that were very numerous. All

papers were collected without “soiling” any of the judgers. We had one soil in a floodplain and all the other soils were upland soils. The day was a good practice day and the evening of rest and relaxation will be well deserved.

We got back to the motel at 4:45 pm and cleaned up before heading out to Mr. Yen's Chinese which we all found to be exactly what we were looking for. I had the vegetable delight and others had a variety with some spicy and others not. We had an interesting and wide ranging conversation and soon all the food was eaten or placed in the small carry out containers. We stopped at a small store on the way home to replace the other needed item that goes well with kettle corn. I headed to my room while the students headed to theirs and I finished the work I needed to do to be ready for tomorrow. The weather looks good after a few thunderstorms tonight.

**Tuesday** - No sleeping in today. We leave at 7:15 am and are in our first pit at 8:15, 15 minutes early. It is cold, about 43 degrees, and the wind has picked up into a nice steady 30 mph. So the wind chill must be about 25 degrees. Only the cows are happy to see us. The cows have walked into the pit and trampled the pit sign. The students work diligently and I hold out in the car after giving my hooded sweatshirt to Sondra because she looks very cold. We go over this example of a soil with a fragipan that is called a Fragiuudalf. The second pit we collect our samples from as it is 100 yards from the car and take the samples to a tool shed so we can sit in the sun and get out of the wind. This description goes smoothly as the soil is another Fragiuudalf. We then head to our third site that is up a hill on a trail that is very muddy so I drive in the grassy area between the tire trails. We go over a few bumps but make the top of the hill without getting stuck. Later we see a Texas van get stuck going up the same hill in the tire tracks. I can't believe that some one would help them push out. Later we see the coach and he was a pusher and got sprayed by the soil from the tires. I can only shake my head and be glad I am not in Iowa.

We ate our PB&J lunch and then do our third site. We look at another site before leaving this area to complete our last soil for the day. It is a strange soil on a floodplain that has stranger soil descriptions at least according to a soil guru from

## Soil Judging in Springfield, Missouri—continued

Minnesota. (Later we learn that I was right and the official judges were wrong on not calling this soil argillic.) While starting this site the team realizes the clinometer we used to measure slope is back at the last site. Since I have had minimal exercise today I walk back to get it about a  $\frac{3}{4}$  mile up hill. However, the Purdue coach has picked up the clinometer and taken it up the hill to site three, another  $\frac{1}{2}$  mile away. So I head up there to get it, arriving back at our floodplain soil after about 30 minutes. I did get my exercise for the day. The wind was still blowing as we left to get out of the soil pits and out of the wind.

We head back to the motel at 3:30 and I take Nick to a Lowe's for a C clamp to fix his chair that had a brace brake. We found what we needed and went back to clean up before our banquet at the Bass Pro Store. We arrive at 6:00 and have an amazing trip through the store to the Hemmingway's Restaurant. The buffet has a great salad bar and cherry pie for dessert. I especially like the mashed potatoes and roast beef.

After dinner the students look around and each buys a child's folding chair for their work in the pits. I head off to the coaches meeting. The opening discussion is about the coming 90% chance for thunderstorms on Thursday, our day for individual sites. After much discussion it is decided by the contest organizers to hold the individual contest on Wednesday starting at noon, since it might be dangerous on Thursday to be out in a thunderstorm, in a soil pit holding metal objects. I agree with their call. The rest of the meeting is going over the 21 soils that are the practice pits. I learn a few things and get confused by a few things but at 9:50 we finish and I head back to the motel to fill in the team. We decide that we stay in the motel in the morning to go over the practice sites and put our crib sheets together for the contest. This will help them get ready for the afternoon contest. The weather tomorrow is for sun and warm afternoon temperatures. They will have a better time than playing in the rain and the mud. The team contest will still be Friday morning.

**Wednesday** – We all had a good nights sleep, though the nights seem to be shorter in Missouri than in Minnesota. I got about six hours and it was time to make some oatmeal and meet the students to go over the practice sites. We

had a PowerPoint presentation that had all the practice sites that was the same one the coaches saw on Tuesday night. They sent it to me via e-mail so it was a nice way to review all practice pits. We finished at 10:45 and I made a quick run to the grocery store for fruit, yogurt and bread. We had lunch and were on our way to the meeting place at Bass Pro Shop.

We left at 12:10 and arrived at the contest sites that were about 20 miles south of town. The next five hours were spent by the students describing three soils with a break between site 2 and 3. The afternoon was partly sunny and a little windy, but it sure beat the rain that is on its way to the area for tomorrow. I wandered around and took pictures of the students describing the soils. I climbed the big hill twice up to site 3 and that was enough for me. They had a lot of treats of fruit, candy bars and water or pop the students could have during their journey between sites 1 and 3. The coaches all stood around trying to figure out what exactly the answers were. Tomorrow we find out the correct answers.

Well I got a quick look at the keys on Thursday and here is a brief summary of the contest pits.

**Site 1** – 6 horizons of very gravelly silt loam with ExGr SiCl 2Bts. The parent material was colluvium on a strath terrace (bedrock controlled). The slope was 14% for this Paleudalf.

**Site 2** - 6 horizons of Silt loam Ap and Bt over SiCl 2Bt on a footslope. The parent material was loess over colluvium for this Paleudalf on 9% slope.

**Site 3** – 6 horizons of very gravelly SiL over ExGr SiCL over Vgr Clay. The parent material was colluvium and residuum for this upland. The 6<sup>th</sup> horizon was actually an R. The pit could only be dug to 110 cm (they labeled it with chemical data so the students figured it was not rock horizon). The soil was a Hapludalf on 14% slope.

We got back at 5:50 and went to a Greek/American Café, though later we found out the owners were from Albania, which is close to Greece. We had a nice meal and I had a Greek (Albanian?) Salad. I went to Bass Pro Shop for some shopping to use my 10% discount coupon we had received. I had a good time looking around. Then it was time to finish my

work and get to bed as I will be busy grading the score cards tomorrow. On the way to the Pro Shop, I dropped off the students at the local dance house next door (I guess the real show started at midnight). Later, they left the bar and went to their room to discuss politics with some boys from Texas. They had some interesting conversations with the Texans.

**Thursday** - I got to sleep a little late so the alarm was a surprise when it went off at 7:00 am. I had some oatmeal and the coaches left in a carpool to go to the NRCS center in Ozark to start the grading process. We had a 30 minute discussion to figure out what to do with site 3 that had the rock problem. We came to a compromise that seemed to satisfy most folks. We then got started and my eyes were still a little teary from all the wind the last three days. It started to rain shortly after we started and continued to rain off and on for most of the day, though no lightning. It was still a good thing to have the individuals yesterday. We had Subway sandwiches at noon and wrapped up the grading at 2:00 pm. The score cards are taken to campus to be entered into the spreadsheet which automatically tabulates the scores.

I visited with the students about the sites though I only could remember what the cards were like as the coaches were not to keep the official score cards. We will get all the answers at the awards meeting on Friday. I went back to my room to clean up and work on my report. I also watched a couple of movies while writing. We are heading out for the Thai Peppers at 7:00 pm because we all had good lunches.

The Thai Peppers restaurant was very good. Nick was able to talk to the waitress in Cambodian as he was raised there as a youngster when his folks were missionaries. I also learned on this trip that his dad is a Gordon Lightfoot fan and so is he. We listened to my CDs as we traveled around. We ordered three dishes, a tofu, noodles and duck with some spice but not too hot. We also had spring rolls and sticky rice for dessert. We had a nice time and it was very relaxing. I sent them all to bed early as Friday is the team event and we have to leave at 7:00 am to arrive at 8:00 am at the contest site that is an hour north of town. I try to go to bed early but sleep is not easy at arriving so I eventually wear myself out by tossing and turning.

**Friday** - The sun is bright and so is the

## Soil Judging in Springfield, Missouri—continued

frost as the temperature is 34. I get my stuff loaded into van, defrost the windows and go back into the eating area and make everyone a waffle as they gradually arrive. We all get something into our stomachs and head north to the contest pits. We arrive at 8:00 am and get the directions to the pits and park in the grass behind the Texas Tech van. At 8:20 am they start the first site and have a break until 10:20 am when they start site two. Site one has a fragipan and is a Fragiudalf while site two is down the slope near a pond and is a wet soil or a Endoaqualf, according to the official descriptions but it looks very brown and not gray.

We finish at noon and go back to the motel to pick up our luggage and clean up. We head to Panera Bread for lunch and meet up with Cal Poly team who were at the contest sites the same time we were. The students decide to meet at the Sunshine bowling alley for a game this afternoon while we all wait it out for the awards ceremony that is scheduled for 5:00 pm. The bowling goes great and I read the newspaper and write a letter. Soon it is time to leave for the awards. At 5:00 pm Harry announces that they are not quite done and in fact the awards don't start till 6:15 pm. They take 15 minutes and Kansas State, from

our region, wins first for the second year in a row. They are the closest school to Springfield and that may have helped them.

We finish in 21/23 place overall and 14/23 for the team event. Karen Jones finished in 68/92 and the others were in the 78-84 place. The soils of Missouri were as difficult to describe as predicted. We head out by 7:00 pm and are on the freeway heading to Minnesota. We stop for dinner at McDonalds and at 10:00 pm I head to the back of the van to sleep and leave the driving to Nick and David for five hours. The night is clear and we arrive in Minneapolis to drop off the first student at 4:00 am. I get home at 4:30 am and the bed feels good. Next fall the regional is in Columbia, Missouri, more rough, red and rocky soils, "Oh My!"



## Executive Secretary Update

### Board of AELSLAGID

Beginning July 1, 2009 there will be a 10% surcharge added to the cost of licenses through the Board of AELSLAGID ([www.aelslagid.state.mn.us](http://www.aelslagid.state.mn.us)), which includes PSS licenses. This was implemented by the Office of Enterprise Technology through a mission of the governor and runs through 2015. Contact your representatives if you like or do not like this surcharge ([www.leg.state.mn.us](http://www.leg.state.mn.us)).

The next fundamentals and professional soil science exam is slated for November 20, 2009 (application deadline was September 21, 2009).

The Board continues to review the model law for geoscientists to determine if any changes are needed. Geoscientists do not have a provision for "work under direct supervision."

There are 90 professional soil scientists licensed in the State of Minnesota in June, 2009. Other professions licensed by the Board of AELSLAGID consist of: architects (3,352), professional engineers (11,721), professional land surveyors (586), landscape architects (412), professional geologists (560) and certified interior designers (758).

### Joint Professional Committee

The JPC will be November 18, 2009 and December 16, 2009 at the AIA offices in the International Market Square building in Minneapolis.

***Please review the updated SOPs on the website (bottom of home page) for discussion and approval at the December meeting.***



affiliated

## Minnesota Association of Professional Soil Scientists

c/o Spectrum Research, Inc.  
4915 E. Superior St. Suite 100  
Duluth, MN 55804

mapss@mnsoilscientist.org

*MAPSS promotes the understanding and wise use of Minnesota's soil resources.*

[www.mnsoilscientist.org](http://www.mnsoilscientist.org)

The Auger is the newsletter of the Minnesota Association of Professional Soil Scientists. It is composed of articles submitted by the MAPSS membership and is published three times each year (February/March, June and October). The Auger is available in PDF format on our website at [www.mnsoilscientist.org](http://www.mnsoilscientist.org).

If you want to contribute articles or announcements contact the editor, Suzanne D'Souza, at 612-741-1365 or [newsletter@mnsoilscientist.org](mailto:newsletter@mnsoilscientist.org).

### MAPSS Officers - 2009

President Barb McCarthy, PSS  
President Elect Michael Whited, PSS  
Past President Mike Lieser  
Secretary Peter Hartman, PSS  
Treasurer Jim Balogh, PSS  
Exec. Secretary Suzanne D'Souza, PSS (ex officio)

### Advertise in the Auger

Classified - first 40 words \$5.00, then \$0.20/ additional word. Position (free to MAPSS members) - same as a classified ad. Ad copy MS Word ready format is \$15.00/column or non-standard \$25.00.

### MAPSS Representation - 2009

Board of AELSLAGID and the Joint Professional Committee - Suzanne D'Souza, PSS

Your advertisement will also be added to the MAPSS website for the duration of one issue of the Auger. Contact the editor:

[mapss@mnsoilscientist.org](mailto:mapss@mnsoilscientist.org).

MPCA Subsurface Sewage Treatment Systems (SSTS) Licensing Stakeholder Task Force - Terry Bovee, PSS

BWSR Wetland Conservation Act Rule Advisory Committee - Peter Miller, PSS

**Renew your MAPSS membership by December 31, 2009!**

**Register for the next fundamental or professional soil science exams by February 16, 2010!**

<http://www.aelslagid.state.mn.us>

**Awards, Scholarships and Fellows!**

<https://www.soils.org/awards/award/>

## MAPSS Committees

*Award Committee – in 2009*  
Jorja DuFresne, PSS

*Education Committee*  
Doug Miller, PSS – Chair  
Peter Hartman, PSS  
Howard Hobbs, PG  
Thomas Jackson, PSS  
Al Gienke, PSS  
Mark Perry  
Steve Lawler, PSS  
Dennis Rodacker, PSS

*Election Committee – in 2009*  
Mike Lieser  
Scott Smith, PSS

*SSTS Committee*  
Laurie Brown, PSS - (on leave)  
Terry Bovee, PSS  
Norm Kuhlman, PSS  
Peter Miller, PSS  
Mike Rutten, PSS  
Kim Steffan, PSS  
Mark Wespetal, PSS

*Membership Committee*  
Jim Barott, PSS – Chair

David Bauer, PSS  
Dennis Fuchs, PSS  
Charles Saari, PSS

*Professional Practice Committee*  
Peter Miller, PSS – Chair  
Kelley Bopray, PSS  
Gary Elsner, PSS  
Tom Fait, PSS

*Scholarship & Funding Committee*  
Roger Berggren, PSS – Chair  
Terry Cooper, PSS  
Suzanne D'Souza, PSS



# 2010 Dues Notification (Renewal)

## Minnesota Association of Professional Soil Scientists

MAPSS is the only professional organization in the State of Minnesota representing the mutual interests of practicing, government, academic, and student soil scientists. Who else helps remind you to pay your dues? Who keeps you informed of legislation and rules affecting professional soil scientists in Minnesota directly? MAPSS of course!!

Please complete this form and return with your dues to the MAPSS Treasurer by December 31, 2009 to avoid paying a reinstatement (late) fee.

First Name \_\_\_\_\_ Middle Initial \_\_\_\_\_ Last Name \_\_\_\_\_  
 Title \_\_\_\_\_ Name of Employer \_\_\_\_\_  
 Address 1 \_\_\_\_\_ Address 2 \_\_\_\_\_  
 City \_\_\_\_\_ State \_\_\_\_\_ Zip Code \_\_\_\_\_  
 Work Phone \_\_\_\_\_ Home Phone \_\_\_\_\_  
 Mobile Phone \_\_\_\_\_ Fax Phone \_\_\_\_\_  
 Primary E-Mail \_\_\_\_\_ Additional E-Mail \_\_\_\_\_  
 Are you licensed? \_\_\_\_\_ License number and where \_\_\_\_\_  
 Membership type \_\_\_\_\_ Year dues last paid \_\_\_\_\_

Membership Type Codes A = Associate F = Full C = Complimentary H = Honorary S = Student

Check here  if you **DO NOT** want your membership info (address, phone numbers and e-mail address) posted on the MAPSS website.

### 2010 Dues for MAPSS Members

Full Member dues (voting privileges)	\$40.00	_____
Associate Member dues	\$25.00	_____
Student Member dues	\$10.00	_____
Honorary and Complimentary dues	no charge	_____
Reinstatement Fee (this is a <i>late</i> fee paid after Dec. 31, 2009)	\$5.00	_____
Gift Donation (circle area(s) where to direct your money)	optional	_____
<i>professional development</i> <i>education/outreach</i> <i>scholarship</i>		
Paper Copy of the Auger Newsletter (3 issues)	\$5.00	_____
MAPSS Baseball Hat (price includes shipping/handling)	\$20.00	_____
<b>Total Due (make check payable to MAPSS):</b>		_____

Mail your check along with this form to:

Mr. James Balogh, MAPSS Treasurer  
4915 E Superior St, Suite 100  
Duluth, MN 55804-2507

# SOIL SCIENTIST OF THE YEAR NOMINATION

MAPSS annually honors one of its members as Soil Scientist of the Year who has made a significant contribution to the practice, enhancement, or understanding of soil science. A brief description to support the nomination is required. The individual will be honored for some special achievement of accomplishment during the previous year (Nov. 1 - Oct. 31).

The Awards Committee will review all nominations and make the selection per the rules and guidelines with final approval by the Executive Committee. Full members in good standing may nominate any member of MAPSS for this award.

## Rules and Guidelines:

1. Eligibility - All MAPSS members (Full and Associate) in good standing with the exception of the current members of the Awards Committee and members named as Soil Scientist of the Year within the last 5 years.
2. Provide reasons and supporting documentation for award (*numbers in parenthesis are a point guide used in reviewing nominees.*):
  - Candidate name
  - Job title
  - Location
  - Principle duties
  - Special achievements or accomplishments (50-80 points) - A statement of 300 words or less supporting the candidate's achievements in developing a better understanding of soil resources, enhancing better uses of soil resources, etc. should be included.
  - Service to MAPSS (10-20 points)
  - Professional/technical society activities (5-10 points)
  - Continuing education (0-10 points)
  - Civil and humanitarian activities (0-10 points)
  - Awards and honors (0-5 points)
3. Provide the following to the chair of the Awards Committee by **November 20<sup>th</sup>** of each year:
  - your name
  - the nominee's name
  - detailed information for items listed under Number 2

**Please send your nomination to:**

Jorja DuFresne, chair  
c/o MAPSS – SS Nomination  
3140 Irving Ave S.  
Minneapolis, MN 55408

The candidate selected as Soil Scientist of the Year will be honored at the **Annual Winter Meeting** of MAPSS on the first Friday in December.

# MAPSS EXECUTIVE COMMITTEE ELECTION - 2009

## CANDIDATE(S) FOR PRESIDENT

To serve as President Elect in 2010, President in 2011 and Past President in 2012

### David Bauer, PSS, CPESC

David has worked in local government for over 10 years. He currently works for the Rice Creek Watershed District as an inspector of construction sites and storm water treatment. Previous to that, he worked for Ramsey Conservation District as a PCA partner inspector for their NPDES permit. Always interested in erosion control, David volunteered for the Douglas SWCD while in high school and the Washington Conservation District while in college. Increasing awareness of the importance of soils in stormwater BMPs is a current goal of his.

David has an M.S. in Soil Science from the University of Minnesota. He is a licensed soil scientist, a Certified Professional in Erosion and Sediment Control, and an Erosion / Sediment Control Specialist through the University of Minnesota. His leadership positions have included President of the Lino Lakes Jaycees, Race Director for the area running races, and Secretary of the Minnesota GIS/LIS Consortium. He has also served as a MAPSS Newsletter editor. In his free time, David enjoys coaching high school track, book club, and his local YMCA.

## CANDIDATE(S) FOR TREASURER

To serve as Secretary in 2010 and 2011

### Janine Anderson (nee Milbrandt)

Janine J. Anderson graduated from the University of Minnesota with a B.S. in Crops, Soils, and Pest Management in 2004. She earned her M.S. degree from Southwest Minnesota State University in 2006 with a degree in Management. She has worked full time as a Soil Scientist for the Natural Resources Conservation Service and has been a MAPSS member for the past 5 years. She has updated over 500,000 acres of land in Lincoln and Pipestone counties. She has also mapped over 60,000 acres of land in Pine and St. Louis counties. She is currently working on the Pine County Soil Survey in Hinckley, MN.

### Larissa Schmitt

Hello, my name is Larissa Schmitt and I am a soil scientist for Natural Resources Conservation Service. For the past 6 years I have worked at the Duluth Soil Survey Office. Besides mapping soils in two subsets of St. Louis county, I have also worked in Koochiching, Pine, and Lake counties. In 2002, I received a Soil Science major from University of Wisconsin- River Falls.

---

## ELECTION BALLOT – 2009

**Only Full or Honorary members may vote.**

**Ballots are due by November 30, 2009 (please account for time in the mail and the Thanksgiving holiday).**

President

Treasurer

David Bauer \_\_\_\_\_

Janine Anderson \_\_\_\_\_

Write-in: \_\_\_\_\_

Larissa Schmitt \_\_\_\_\_

Write-in: \_\_\_\_\_

Only ballots that have the member's signature on the outside of the envelope will be counted!

**Mail your ballot to:**            **Mike Lieser**  
   **102 W Hillside Ave**  
   **Fergus Falls, MN 56537**

Election results will be announced at the December 4, 2009 meeting.